

Interactive Catalog

Honeywell Sensing and Control replaces the PDF product catalog with the **Interactive Catalog**. The Interactive Catalog is a powerful search tool that makes finding product information. It includes installation, application, and more information than ever before.

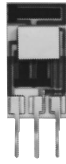
Replaces Catalog Pages

replaced
The Interactive Catalog is
to find



Click this icon to try the new Interactive Catalog.

Honeywell SS94A2



FEATURES

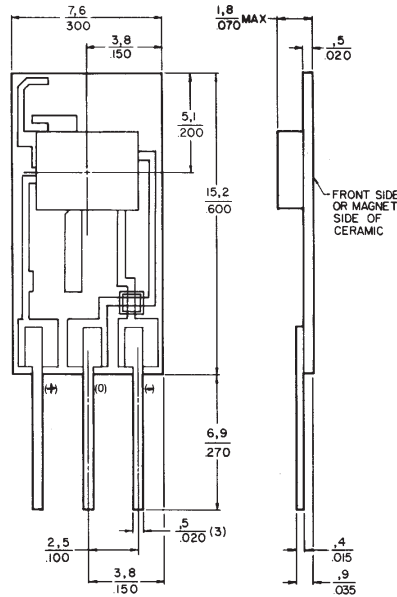
- Single current sinking or current sourcing linear output
- Improved temperature stability
- Three pin in-line printed circuit board terminals
- Standard .100" mounting centers
- Laser trimmed thin film and thick film resistors minimize sensitivity variations and compensate for temperature variations
- Flux range of ± 100 to ± 2500 gauss

OPERATION

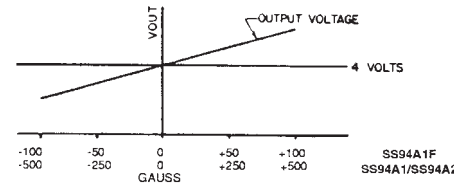
The SS9 utilizes a Hall effect integrated circuit chip which provides increased temperature stability and performance. Laser trimmed thick film resistors on the ceramic substrate and thin film resistors on the integrated circuit reduce null and gain shifts over temperature which results in consistent sensitivity from one device to the next.

MOUNTING DIMENSIONS (For reference only)

SS9



TYPICAL TRANSFER CHARACTERISTICS



Analog

SS9 ORDER GUIDE

| Catalog Listing | SS94A1 | SS94A1B | SS94A1E | SS94A1F | SS94A2 | SS94A2C | SS94A2D |
|---|------------------------|------------------------|------------------------|------------------------|------------------------|------------------------|------------------------|
| Main Feature | Gen. purpose | 5 VDC operation | Low drift | High sensitivity | Noise shielded†† | Noise shielded†† | Noise shielded†† |
| Supply Voltage (VDC)* | 6.6 to 12.6 | 4.5 to 8.0 | 6.6 to 12.6 | 6.6 to 12.6 | 6.6 to 12.6 | 6.6 to 12.6 | 6.6 to 12.6 |
| Supply Current (mA)** | 13 typ. 30 max. | 8 typ. 17.5 max. | 13 typ. 30 max. | 13 typ. 30 max. | 13 typ. 30 max. | 13 typ. 30 max. | 13 typ. 30 max. |
| Output Current (mA) Sinking or Sourcing | 1 max. | 1 max. | 1 max. | 1 max. | 1 max. | 1 max. | 1 max. |
| Response Time (μ sec.) | 3 typ. | 3 typ. | 3 typ. | 3 typ. | 3 typ. | 3 typ. | 3 typ. |
| Magnetic Characteristics*** Span* | .625 V_s | .375 V_s | .625 V_s | .625 V_s | .625 V_s | .625 V_s | .625 V_s |
| Range (gauss)* | -500 to +500 | -500 to +500 | -500 to +500 | -100 to +100 | -500 to +500 | -1000 to +1000 | -2500 to +2500 |
| Sensitivity (mV/gauss @ 25°C) | 5.0 \pm 1 | 1.875 \pm .100 | 5.0 \pm 1 | 25.0 \pm .5 | 5.0 \pm 1 | 2.50 \pm .05 | 1.00 \pm .02 |
| Linearity† (% span) | -0.8 typ. -1.5 max. | -0.8 typ. -1.5 max. | -0.8 typ. -1.5 max. | -0.8 typ. -1.5 max. | -0.8 typ. -1.5 max. | -0.8 typ. -1.5 max. | -0.8 typ. -1.5 max. |
| Vout (0 gauss @ 25°C)*** | 4.00 \pm .04V | 2.50 \pm .05V | 4.00 \pm .04V | 4.00 \pm .08V | 4.00 \pm .04V | 4.00 \pm .04V | 4.00 \pm .04V |
| Temperature Error (all %s reference 25°C value)* | | | | | | | |
| Null (%/°C) | \pm .02 | \pm .025 | \pm .01 | \pm .10 | \pm .02 | \pm .0125 | \pm .007 |
| Gain (%/°C) | \pm .02 | \pm .025 | \pm .02 | +02 -055 | \pm .02 | \pm .02 | \pm .02 |

* -40° to 125°C.

MilliTesla = Gauss 10^{-1}

** Excludes load. Typical at 25°C/Maximum at -40°C.

*** @ $V_s = 5$ VDC for SS94A1B only/@ $V_s = 8$ VDC for all others.

† Derived from straight line between end points.

†† Silver coating on back of ceramic is electrically connected to - terminal. Specified using a 2.2K Ω resistor unless otherwise noted.

Null voltage (Vout at 0 gauss) and sensitivity are ratiometric to supply voltage.

Magnets page 25.

Application consideration: The output is clamped at the high end. Clamping voltage may be as low as 9VDC. The output will not exceed the clamping voltage regardless of field strength or supply voltage.